

# REIMAGINING HORTPARK

## Defining HortPark as a Destination Park



Building a horticulture & gardening hub for the community

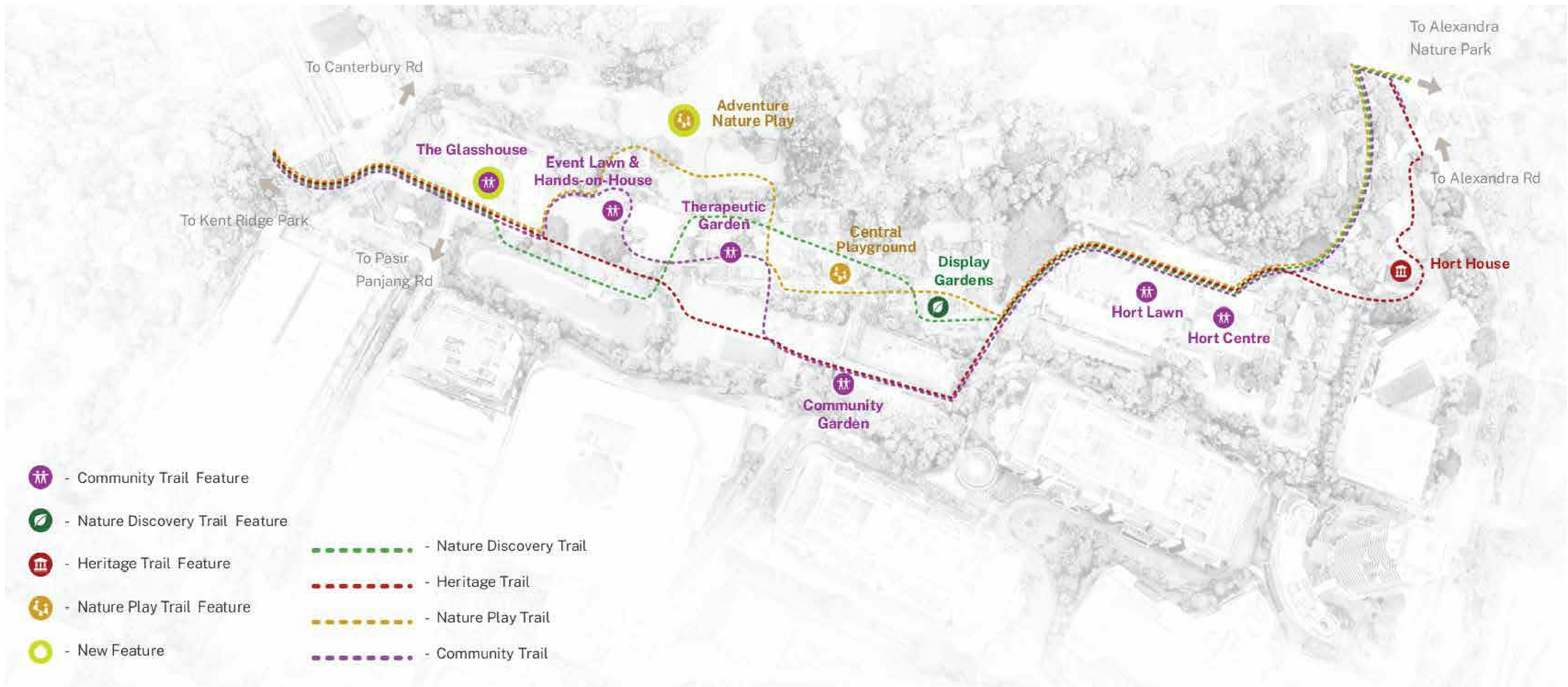
Strengthen the identity of HortPark as a vibrant horticulture and gardening hub

Unify the spaces within HortPark

Incorporate functional spaces and activities including a garden library and workshops

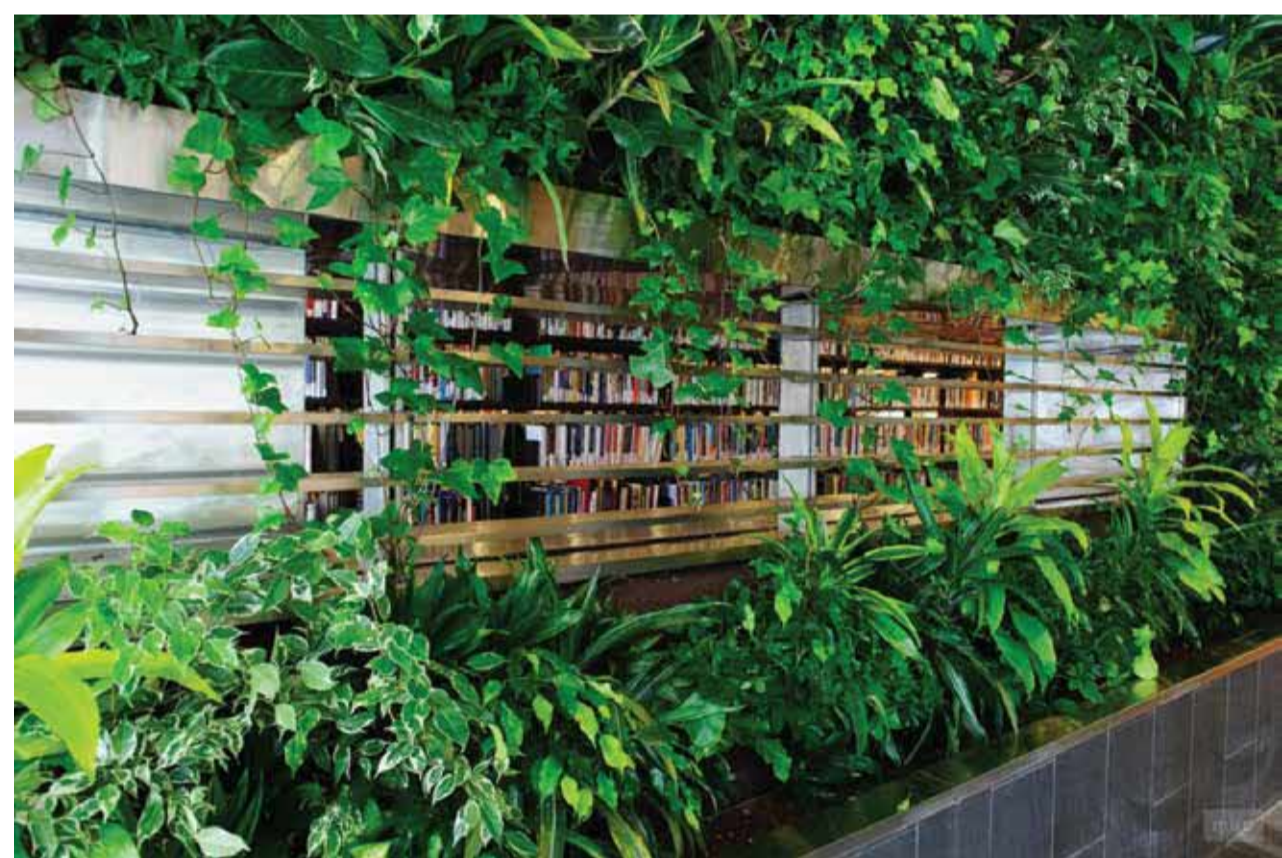
Serve as a distinctive and energetic horticulture & gardening hub

## Potential trail features in HortPark



There will be three trails across HortPark, with a focus on community spots. Each trail will come with its own set of unique landmarks and features

### Nature Discovery



**Garden Library**

Visitors are invited to explore curated collections of flora, discover planting ideas, find inspiration and learn at their own pace through immersive reading zones amidst lush greenery



**Gardening Hub**

Guided workshops, edible gardens and tranquil pockets of space encourage visitors to hone their gardening skills and reconnect with nature

### Nature Play



**Self-Directed Play**

Play spaces encourage building an emotional connection with nature, nurturing curiosity and creativity through special design elements



**Biophilic Play Elements**

Natural materials encourage hands-on experiential learning, facilitating a connection with nature

### Community



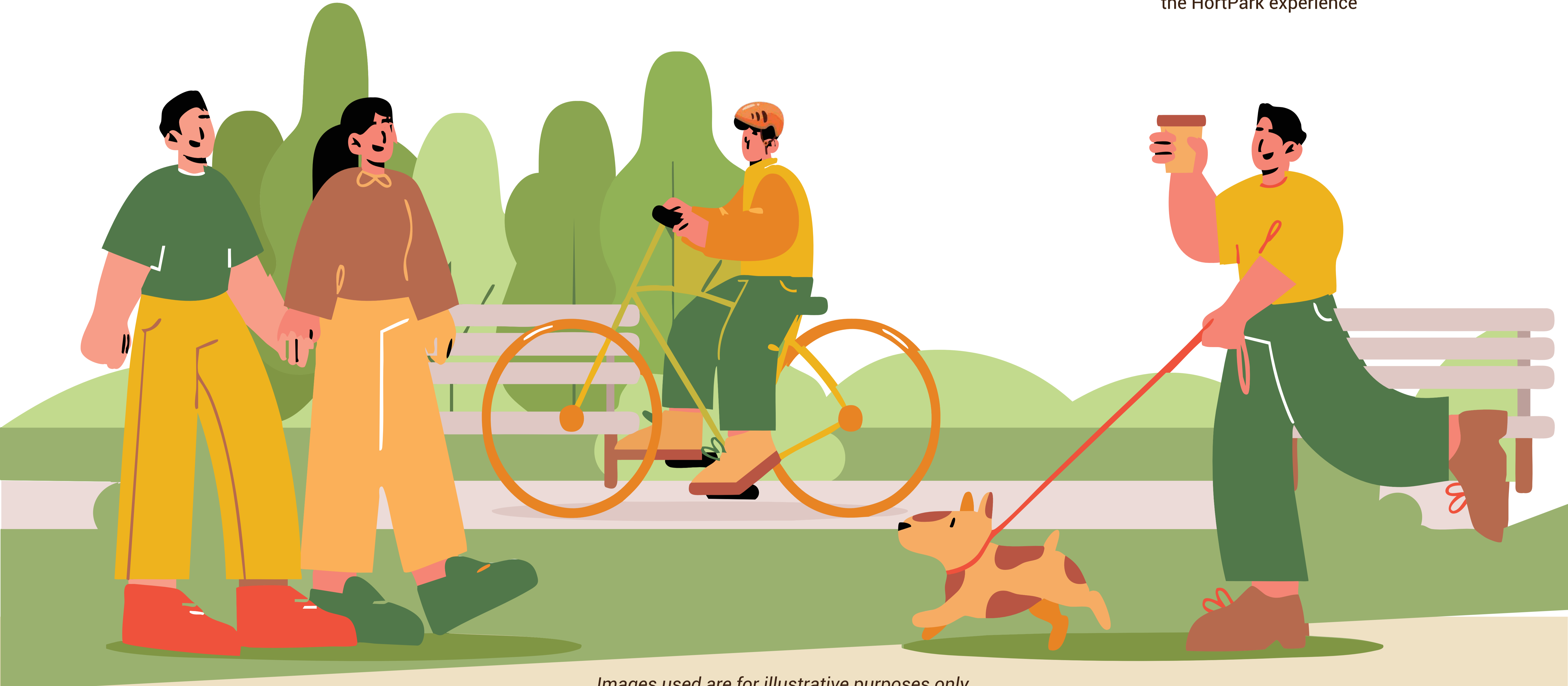
**Community Garden**

An inviting space for residents to take part in a vibrant community with enrichment activities, hands-on workshops, and other green hobbies that foster a deeper connection with nature



**The Marketplace**

A vibrant weekend market that showcases fresh produce, artisanal handicrafts, local food, and live music, bringing new energy and variety to the HortPark experience



Images used are for illustrative purposes only.

Be part of the transformation  
-Share your ideas

<https://go.gov.sg/nparkshp>

